

U[⚡]power



Atlantis



2200
VA

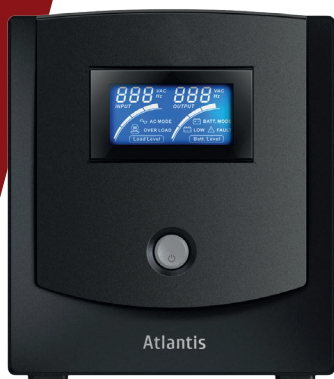
HOSTPOWER 2202

Line-Interactive Sinewave UPS

2200 VA

HOSTPOWER 2202

Line-Interactive Sinewave UPS



La linea di prodotti HostPower è in grado di proteggere qualsiasi sistema elettrico o elettronico nel caso in cui si verifichi una variazione della tensione di alimentazione. Le principali caratteristiche di questa linea di UPS sono:

- Microprocessor Based Design a tecnologia Line-Interactive con forma d'onda sinusoidale
- L'AVR multistadio integrato permette l'utilizzo della rete anche quando le condizioni della stessa non sono ottimali garantendo alle utenze collegate la stabilità della linea di alimentazione
- Ampio display LCD con tutti i parametri di funzionamento e Interfaccia USB integrata
- Protezione contro il corto circuito ed il sovraccarico
- Gestione avanzata delle batterie ed estrema semplicità nella sostituzione
- Protezione modem integrata
- Tempo di intervento < di 6ms
- Software di management incluso

1100
WATT

CPU

AVR

LCD

2x
BATTERY
12V@9.0A/h

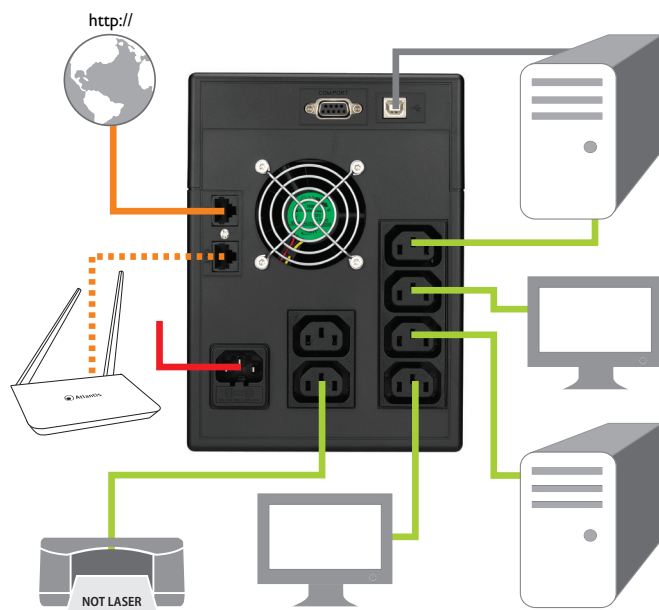


SPECIFICHE TECNICHE

POWER RATING (VA)	2200
POWER RATING (W)	1100
INPUT	<ul style="list-style-type: none"> • Voltage: 162-290V • Frequency: 50Hz±5%
OUTPUT	<ul style="list-style-type: none"> • Voltage: 220V(±10%) [AC] / 220V(±7%) [INV] • Frequency: 50Hz (±1%) • AVR: Built-in • Waveform: Pure SineWave
TRANSFER Line/Battery	Less than 2-6 ms (typical), 10 Max
EFFICIENCY	Total Efficiency Over 80%
BATTERY	<ul style="list-style-type: none"> - Voltage: 24VDC - Capacity: 12V/9.0Ah - Quantity: 2 - Recharge Time: 6 hours to (90%) - Type: Sealed Maintenance Free Lead Acid VRLA Type
INDICATORS	LED Display: Input Voltage, Output Voltage, Load Level Indicator, Overload, Utility Normal, Backup, Battery Low and Battery Fault conditions
PROTECTION	<ul style="list-style-type: none"> - Overload AC Buzzer continuously alarms then UPS shuts down after 10 seconds (>110%) - Overload Inverter UPS shuts down after 10 seconds (>110%) - Short Circuit INV Input Fuse & Electric Circuit - Short Circuit AC Electric Circuit - Battery Over-drain Two stages: Controlled Battery Low Warning & Cut Off - Modem (RJ11) & LAN (RJ45) - Spike Suppression Meets EN61000-4-5 - Noise Suppression Meets EN50991-1
ALARM	<ul style="list-style-type: none"> • Battery Mode (sound every 10 seconds) • Low Battery (sound every seconds) • OverLoad (sound every 0.5 seconds) • Battery Replacement Alarm (sound every 2 seconds) • Fault (continuously sounding)
CONNECTIONS	<ul style="list-style-type: none"> - Output 6xIEC (Battery Power Supplied) - Computer USB / RS232
NOISE LEVEL	Less than 55dB (Active FAN)
BACKUP TIME	10 to 30 mins for typical PC Load
DIMENSIONS (WxHxD)	205 x 160 x 400 mm
NET WEIGHT	12.2 Kg (with Battery)
ENVIRONMENTS	• Temperature 0°-40° C • Humidity 0-95% (non-condensing)
CERTIFICATION	CE

PUNTI DI FORZA

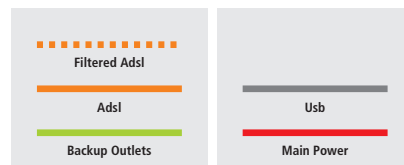
- Microprocessor Based Design a tecnologia Line-Interactive con forma d'onda sinusoidale
- L'AVR multistadio integrato permette l'utilizzo della rete anche quando le condizioni della stessa non sono ottimali garantendo alle utenze collegate la stabilità della linea di alimentazione
- Tempo di intervento minore di 6ms
- Doppia Batteria per una lunga durata in assenza di rete elettrica
- Gestione avanzata delle Batterie ed estrema semplicità nella sostituzione
- Ampio Display LCD con tutti i parametri di funzionamento
- Interfaccia USB/RS232
- Protezione Modem integrata
- Il Software di management incluso permette lo spegnimento controllato del sistema e di controllare lo stato di funzionamento dell'UPS



Backup Time (minute)	40'	17'	11'	3'	2'	45''
Power Rating (W)	120	240	360	720	840	1100
Power Rating (VA)	240	480	720	1440	1680	2200

UPS
Code: A03-HP2202
EAN: 8026974006628

IT Tutti i marchi riportati sono registrati ed appartengono ai rispettivi proprietari. Le specifiche riportate possono cambiare senza preavviso. Nessuna responsabilità per errori e/o omissioni.
 EN All rights registered. Specifications are subject to change without prior notice. No liability for technical errors and/or omissions.



Atlantis
www.atlantis-land.com

2200 VA

HOSTPOWER 2202

Line-Interactive Sinewave UPS



The HostPower product line can protect any electrical or electronic system in the event of a change in the supply voltage.

The main features of this UPS line are:

- Microprocessor Based Design with Line-Interactive technology with waveform sinusoidal
- The integrated multistage AVR allows the use of the network even when the its conditions are not optimal, guaranteeing the stability of the power supply line to the connected users
- LCD display with all operating parameters and USB interface integrated
- Short circuit and overload protection
- Advanced battery management and extreme simplicity in replacement
- Integrated modem protection
- Intervention time <6ms
- Management software included

1100
WATT

CPU

AVR

LCD

2x
BATTERY
12V@9.0A/h

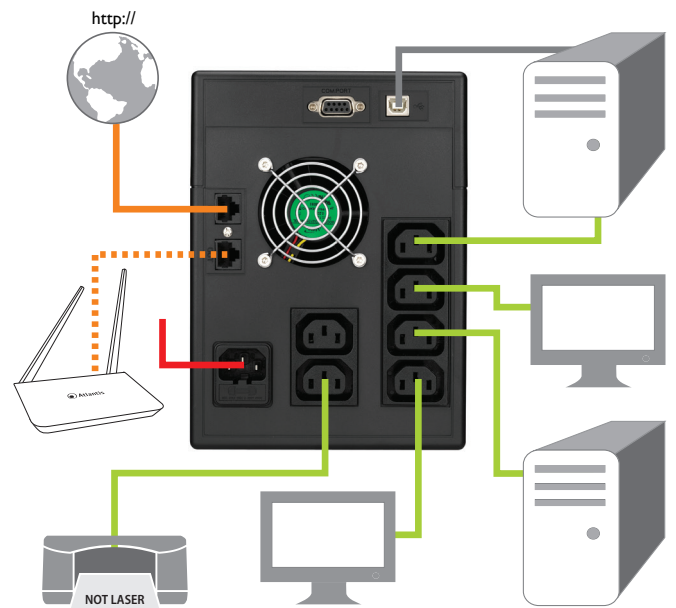


TECHNICAL SPECIFICATIONS

POWER RATING (VA)	2200
POWER RATING (W)	1100
INPUT	<ul style="list-style-type: none"> • Voltage: 162-290V • Frequency: 50Hz±5%
OUTPUT	<ul style="list-style-type: none"> • Voltage: 220V(±10%) [AC] / 220V(±7%) [INV] • Frequency: 50Hz (±1%) • AVR: Built-in • Waveform: Pure SineWave
TRANSFER Line/Battery	Less than 2-6 ms (typical), 10 Max
EFFICIENCY	Total Efficiency Over 80%
BATTERY	<ul style="list-style-type: none"> - Voltage: 24VDC - Capacity: 12V/9.0Ah - Quantity: 2 - Recharge Time: 6 hours to (90%) - Type: Sealed Maintenance Free Lead Acid VRLA Type
INDICATORS	LED Display: Input Voltage, Output Voltage, Load Level Indicator, Overload, Utility Normal, Backup, Battery Low and Battery Fault conditions
PROTECTION	<ul style="list-style-type: none"> - Overload AC Buzzer continuously alarms then UPS shuts down after 10 seconds (>110%) - Overload Inverter UPS shuts down after 10 seconds (>110%) - Short Circuit INV Input Fuse & Electric Circuit - Short Circuit AC Electric Circuit - Battery Over-drain Two stages: Controlled Battery Low Warning & Cut Off - Modem (RJ11) & LAN (RJ45) - Spike Suppression Meets EN61000-4-5 - Noise Suppression Meets EN50991-1
ALARM	<ul style="list-style-type: none"> • Battery Mode (sound every 10 seconds) • Low Battery (sound every seconds) • OverLoad (sound every 0.5 seconds) • Battery Replacement Alarm (sound every 2 seconds) • Fault (continuously sounding)
CONNECTIONS	<ul style="list-style-type: none"> - Output 6xIEC (Battery Power Supplied) - Computer USB / RS232
NOISE LEVEL	Less than 55dB (Active FAN)
BACKUP TIME	10 to 30 mins for typical PC Load
DIMENSIONS (WxHxD)	205 x 160 x 400 mm
NET WEIGHT	12.2 Kg (with Battery)
ENVIRONMENTS	• Temperature 0°-40° C • Humidity 0-95% (non-condensing)
CERTIFICATION	CE

PLUS

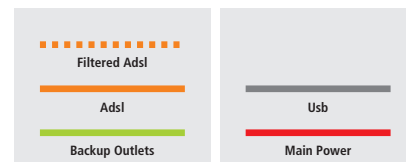
- Microprocessor Based Design Line Interactive SineWave Topology
- Wide input range application without using battery power (AVR)
- Transfer time less than 6ms
- Two batteries for long time backup
- Advanced Battery Management & Easy Swappable Battery Function
- LCD Display
- RS232/USB Communication Interface
- Modem Internet Protection
- Management Software is included



Backup Time (minute)	40'	17'	11'	3'	2'	45''
Power Rating (W)	120	240	360	720	840	1100
Power Rating (VA)	240	480	720	1440	1680	2200

UPS
Code: A03-HP2202
EAN: 8026974006628

IT Tutti i marchi riportati sono registrati ed appartengono ai rispettivi proprietari. Le specifiche riportate possono cambiare senza preavviso. Nessuna responsabilità per errori e/o omissioni.
 EN All rights registered. Specifications are subject to change without prior notice. No liability for technical errors and/or omissions.



Atlantis
www.atlantis-land.com